

LEVELING KIT

Front Lift (Strut) Spacer



#LK1

Compatibility

Toyota

Land Cruiser 300 Series [2021-2025]

Land Cruiser 200 Series [2008-2021]

Tundra [2008+]

Lexus

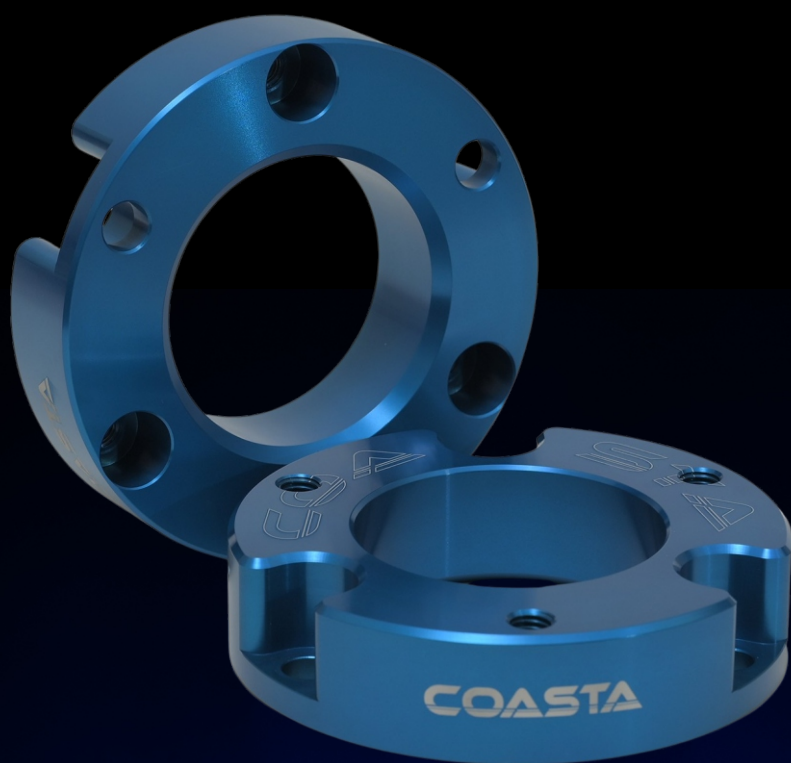
LX J300 (LX500, LX600) [2021-2025]

LX J200 (LX450, LX570) [2007-2023]



LEVELING KIT

Front Lift (Strut) Spacer



#LK2

Compatibility

Toyota

FJ Cruiser[2007+]

LC Prado 120[2003-2009]

LC Prado 150[2010-2023]

Fortuner[2005+]

Hilux Revo / Vego [2022+ (2024GR but not GR sport)]

Tacoma [2005-2023]

4Runner [2003-2024]



LEVELING KIT

Front Lift (Strut) Spacer



#LK3

Compatibility

Ford

Ford Ranger T9 Next Gen [2023+]

Ford Ranger T8/Raptor [2018 - 2021]

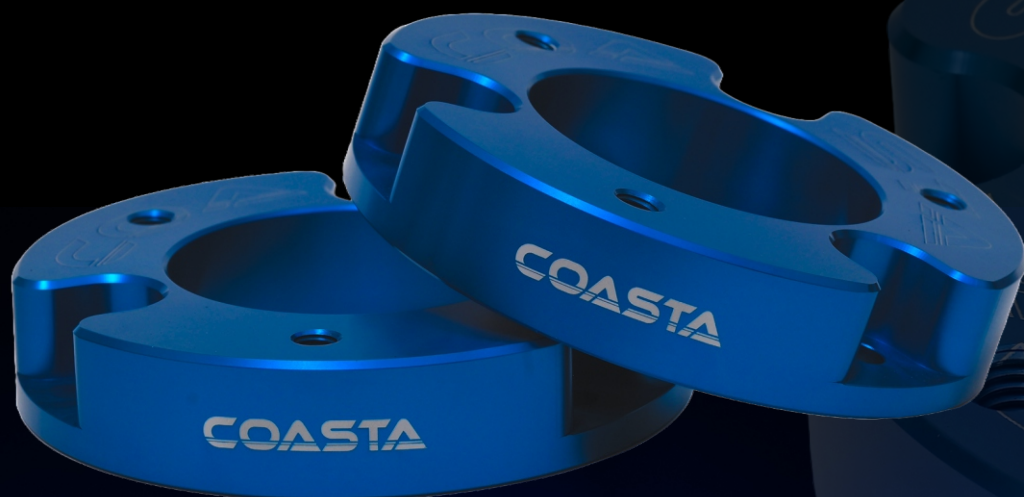
Mazda

Mazda BT-50 [2012-2029]



LEVELING KIT

Front Lift (Strut) Spacer



#LK4

Compatibility

Nissan

Patrol Y62 [2010-2023]

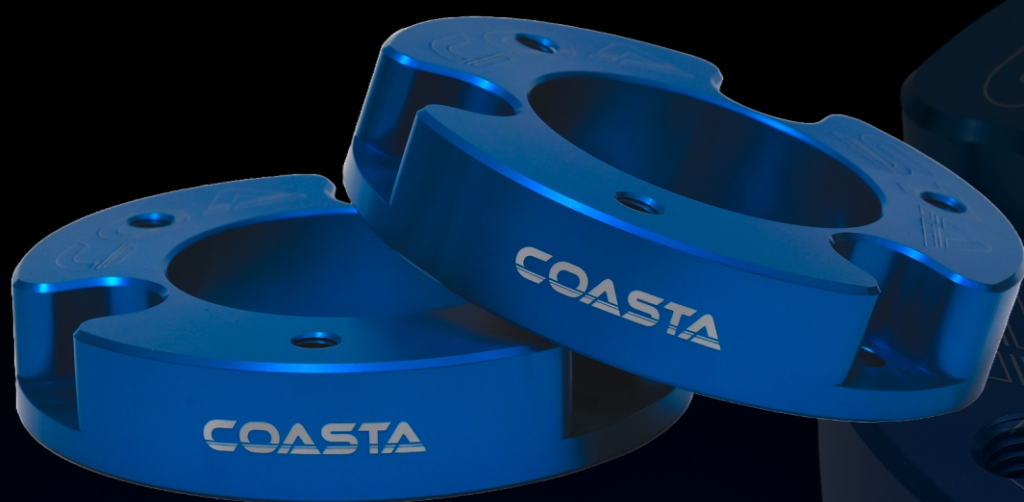
Infinity

Infiniti QX56/QX80 [2010-2023]



LEVELING KIT

Front Lift (Strut) Spacer



#LK5

Compatibility

Jetour

T2 [2023+]

Easy bolt-on installation. This can be installed in about 1-2 hours and does not require the strut/spring to be disassembled.
Installing these spacers gives a noticeably aggressive look.
Maintains factory ride quality.
High-quality hardware is used for strength and durability.
Provides additional fender clearance for larger tires and wheels.
Increased ground clearance.



LEVELING KIT

Front Lift (Strut) Spacer



#LK6

[Compatibility](#)

Toyota

Landcruiser Prado 250 [2024+]

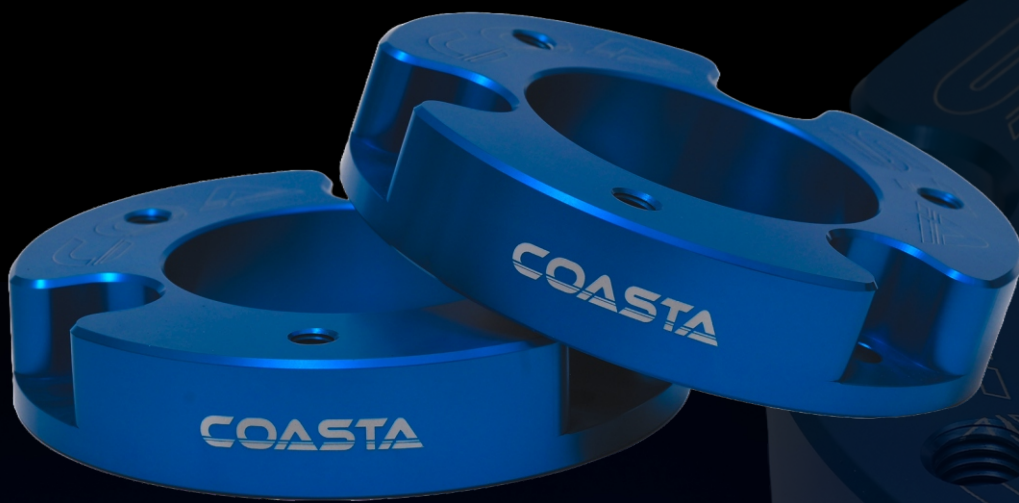
Lexus

GX J250 (GX550) [2024+]



LEVELING KIT

Front Lift (Strut) Spacer



#LK7

Compatibility

GMC

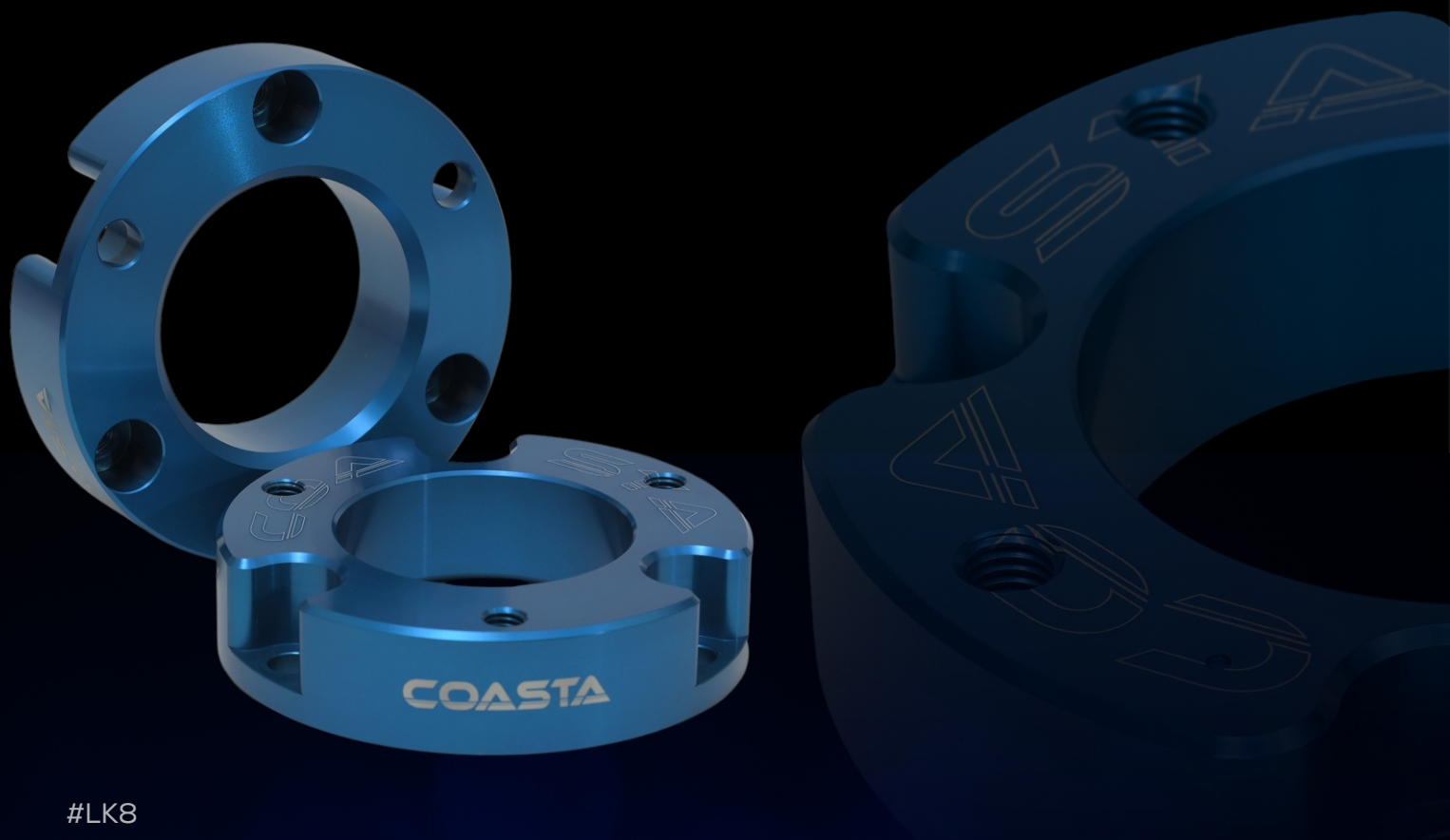
GMC Sierra 1500 [2007-24]

Chevrolet Silverado 1500 [2007-24]



LEVELING KIT

Front Lift (Strut) Spacer



#LK8

Compatibility

Ford

Ford F-150 [2004-2018/23]

Ford Expedition [2003-2018]



LEVELING KIT

Front & Rear Lift (Coil) Spacer



#LK9
#LK11

Compatibility

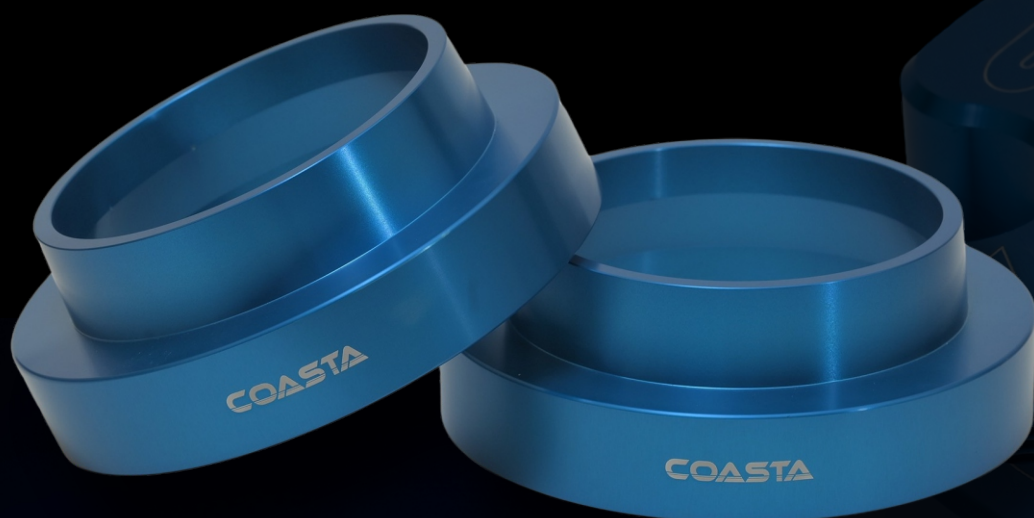
Suzuki

Suzuki Jimny [1998+]



LEVELING KIT

Rear Lift (Coil) Spacer



#LK10

Compatibility

Toyota

FJ Cruiser[2007+]

LC Prado 120[2003-2009]

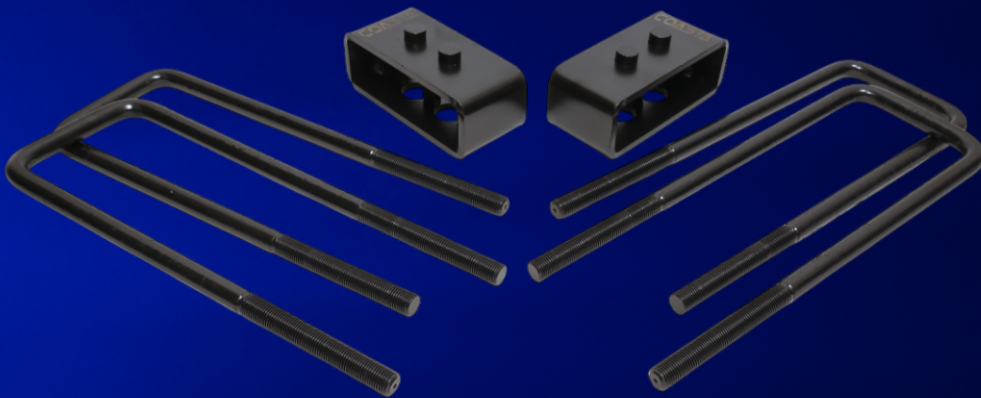
LC Prado 150[2010-2023]

4Runner [2003-2024]



LEVELING KIT

Rear Lift (Block U Bolt) Spacer



One of the easiest and most effective ways to put larger tires on your vehicle and give it a more aggressive look is by getting an extra lift with a COASTA Leveling Lift Kit (Lift Spacers).

#LK12

Compatibility

Ford

Ford F-150 [2004-2018/23]



LEVELING KIT

Rear Lift (Block U Bolt) Spacer



One of the easiest and most effective ways to put larger tires on your vehicle and give it a more aggressive look is by getting an extra lift with a COASTA Leveling Lift Kit (Lift Spacers).

#LK13

Compatibility

Toyota

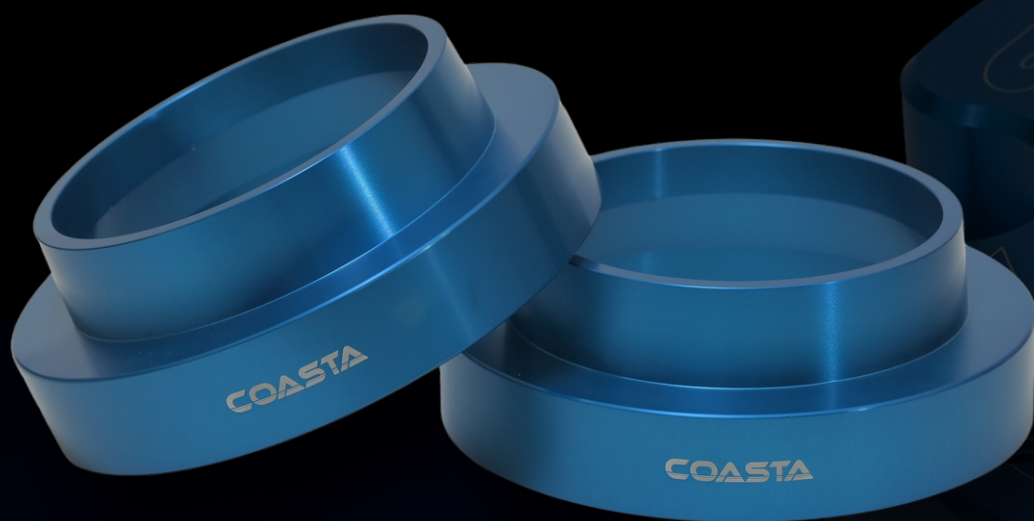
Tacoma [2005-2023]

Hilux 8th AN120/130 [2015-2023]



LEVELING KIT

Rear Lift (Coil) Spacer



#LK14

Compatibility

Nissan

Patrol Y62 [2010-2023]

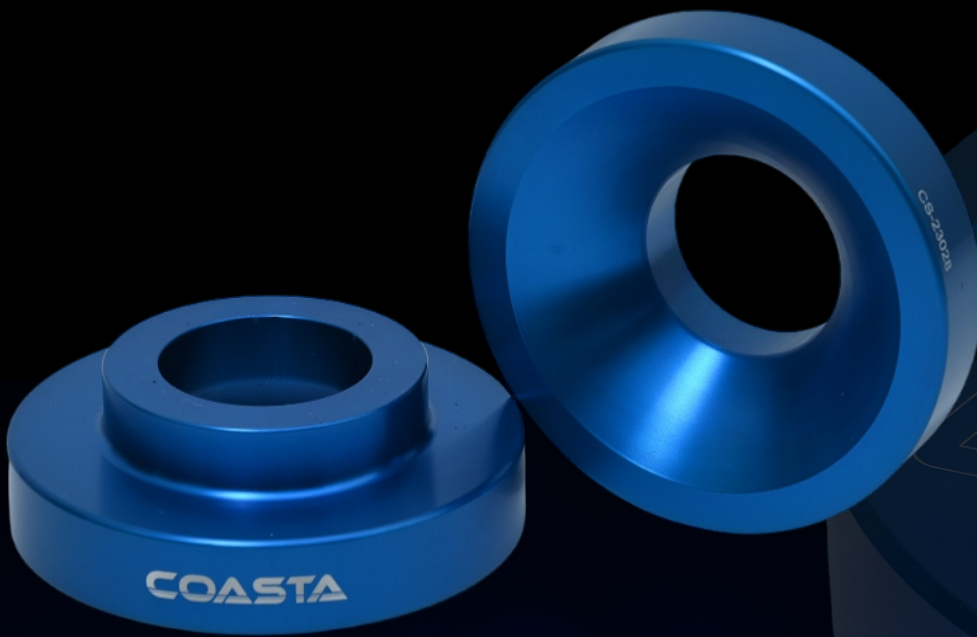
Infinity

Infiniti QX56/QX80 [2010-2023]



LEVELING KIT

Rear Lift (Coil) Spacer



#LK15

Compatibility

Jetour

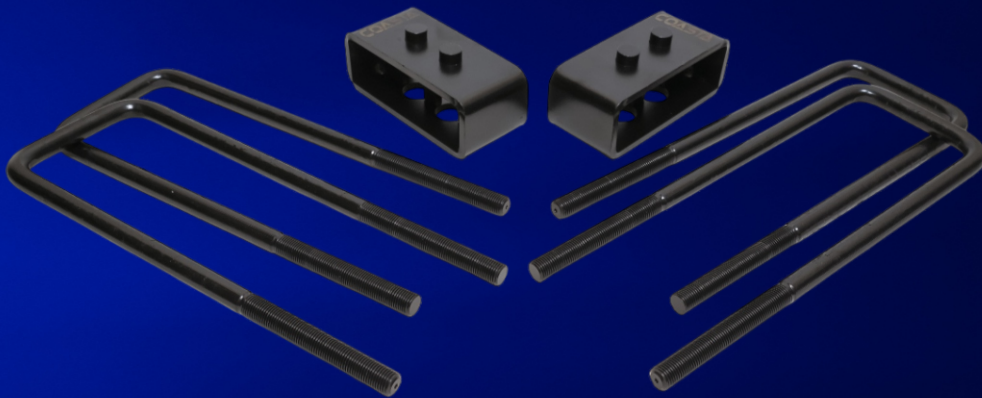
T2 [2023+]

Easy bolt-on installation. This can be installed in about 1-2 hours and does not require the strut/spring to be disassembled.
Installing these spacers gives a noticeably aggressive look.
Maintains factory ride quality.
High-quality hardware is used for strength and durability.
Provides additional fender clearance for larger tires and wheels.
Increased ground clearance.



LEVELING KIT

Rear Lift (Block U Bolt) Spacer



One of the easiest and most effective ways to put larger tires on your vehicle and give it a more aggressive look is by getting an extra lift with a COASTA Leveling Lift Kit (Lift Spacers).

#LK16

Compatibility

GMC

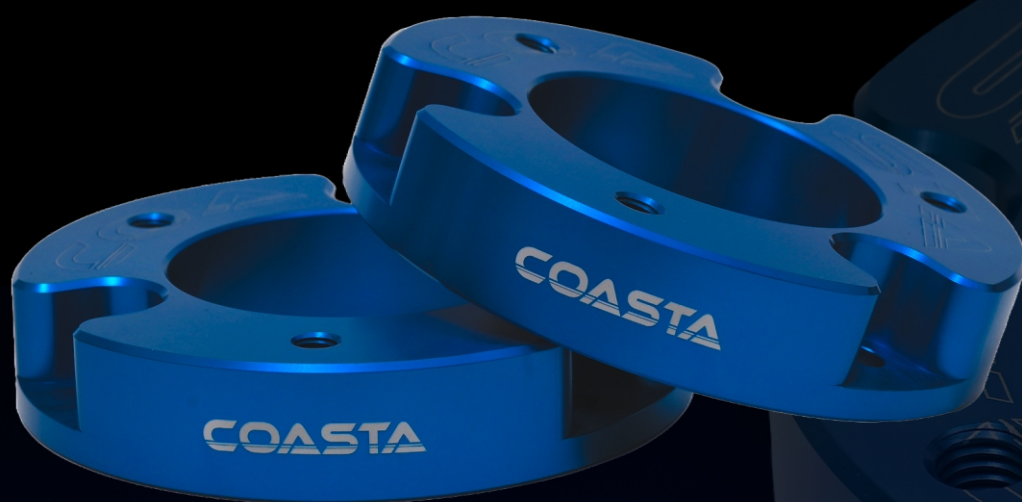
GMC Sierra 1500 [2007-24]

Chevrolet Silverado 1500 [2007-24]



LEVELING KIT

Front Lift (Strut) Spacer



#LK17

Compatibility

GWM

TANK 300 [2024+]

TANK 500 [2024+]

